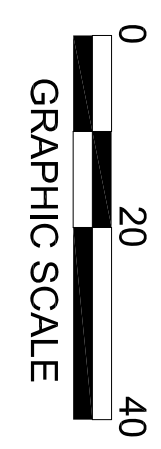
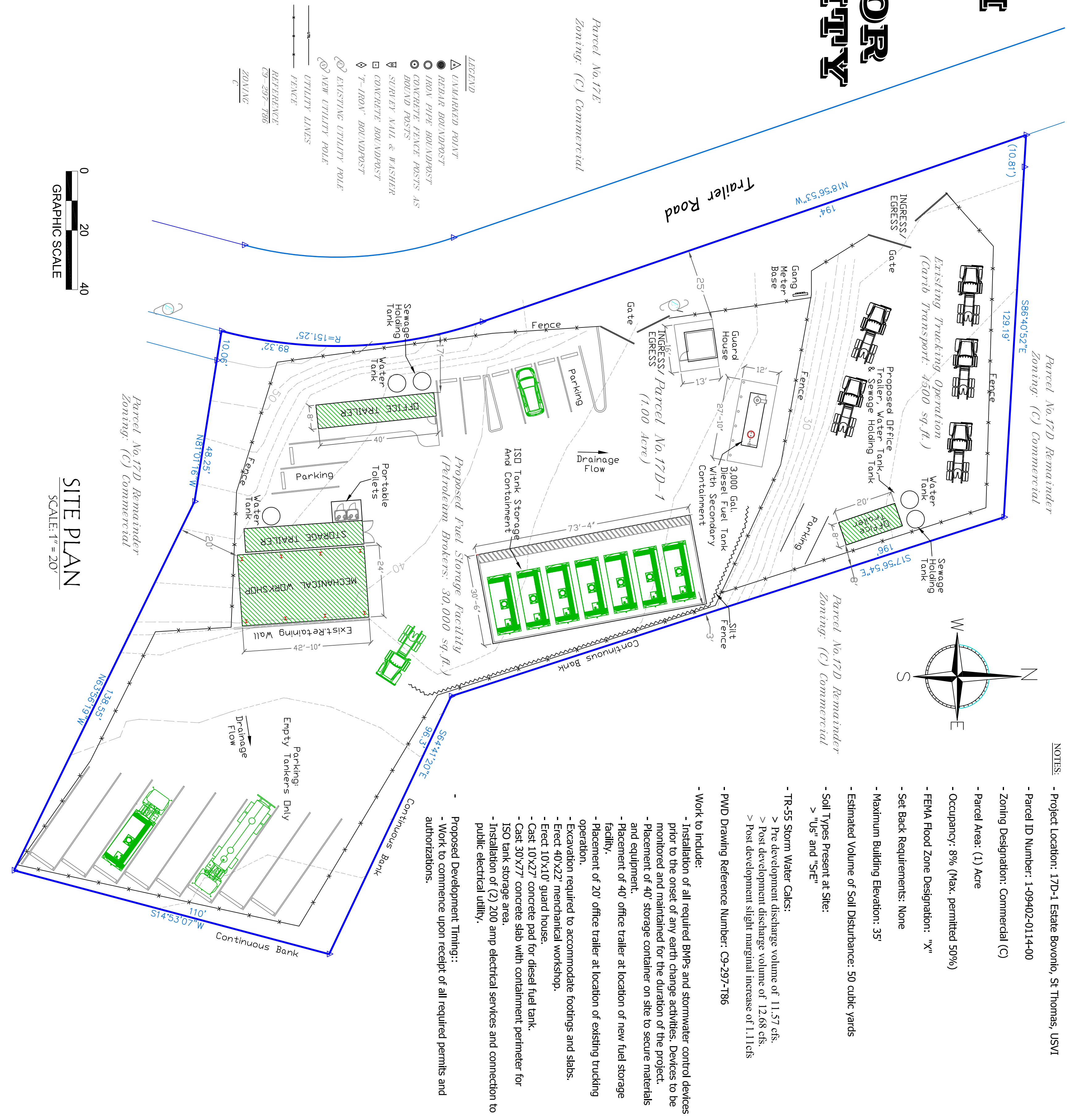
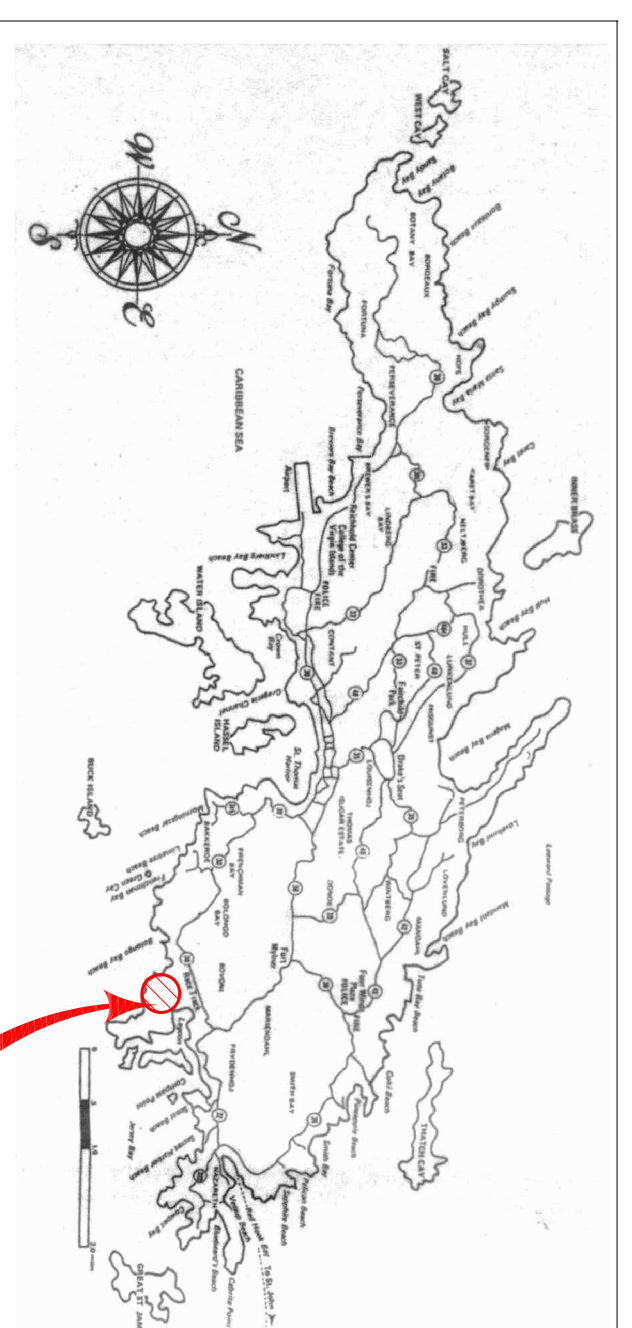


DRY MARINA LLC 17D-1 ESTATE BOVONI ST. THOMAS, USVI

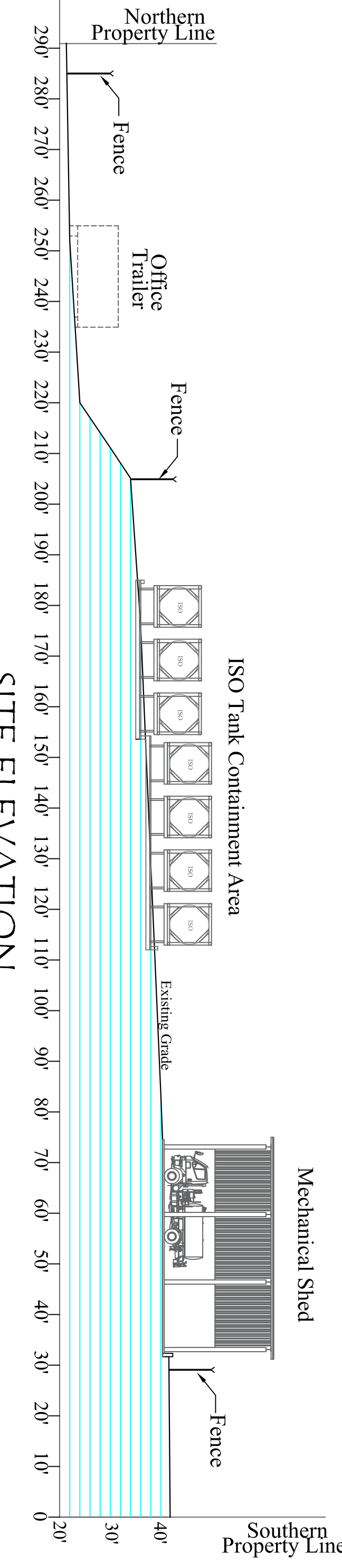
LAND DEVELOPMENT FOR USE AS STORAGE FACILITY

SHEET INDEX

PAGE C1: COVER SHEET, SITE PLAN & SITE ELEVATION
PAGE A1: FLOOR PLAN, ELEVATIONS, & DETAILS



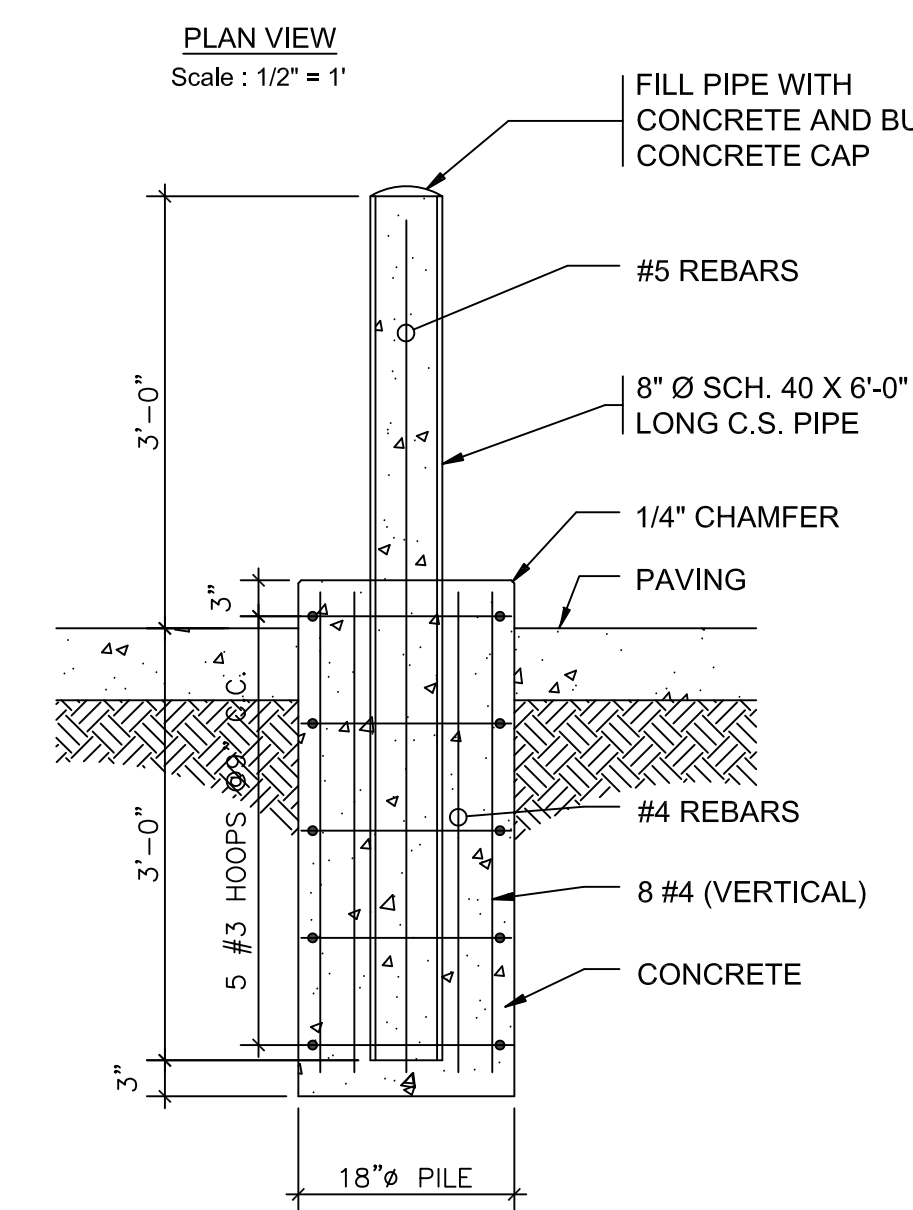
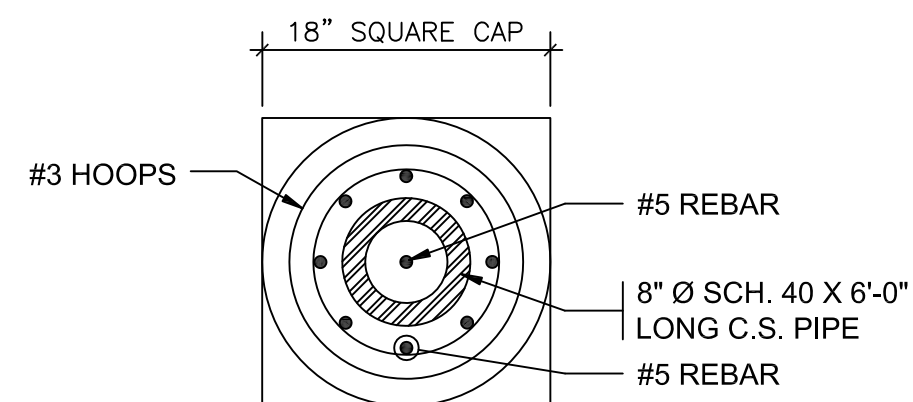
SITE PLAN
SCALE: 1" = 20'



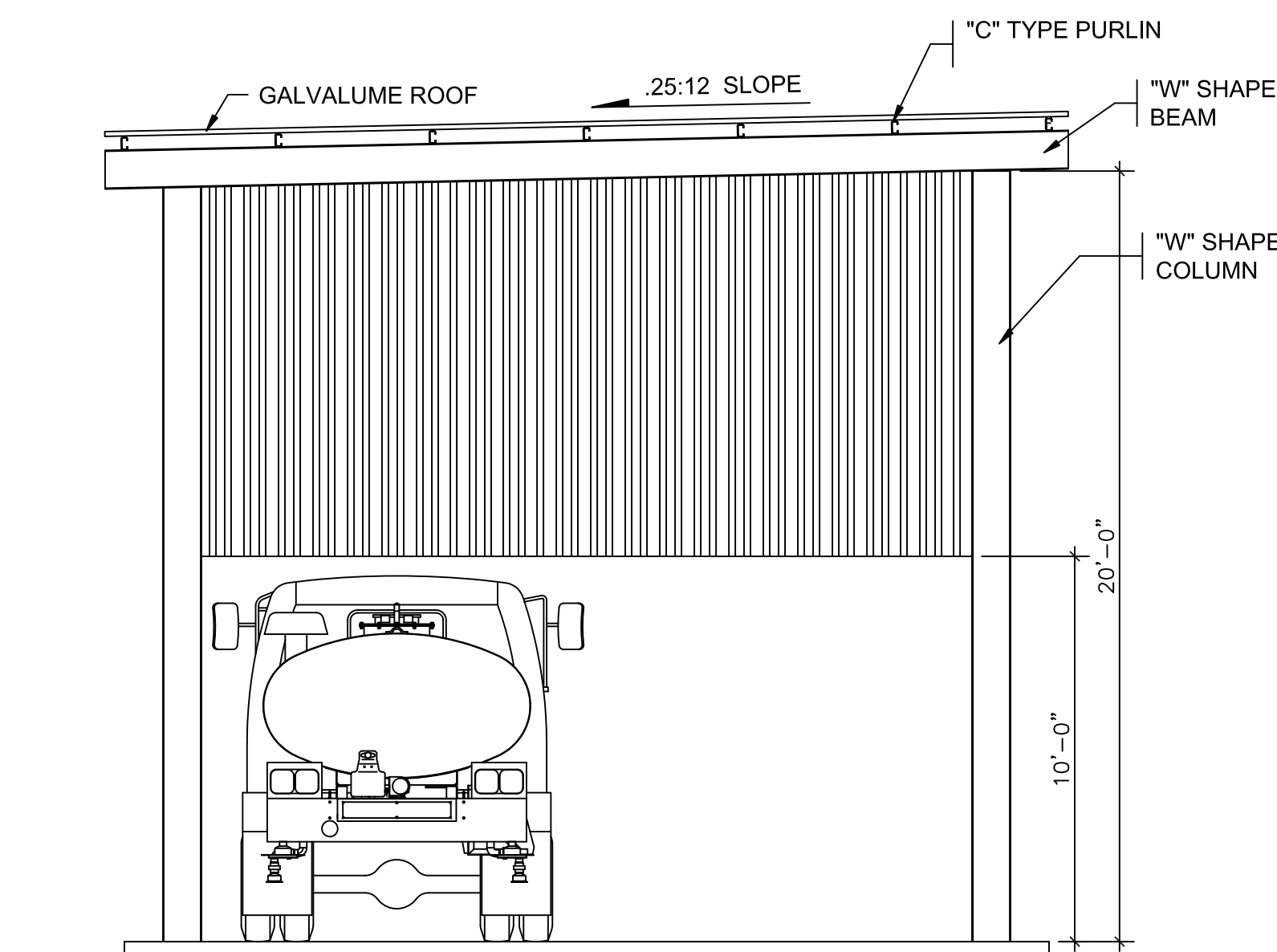
NOTES:

- Project Location: 17D-1 Estate Bovonio, St. Thomas, USVI
- Parcel ID Number: 1-09402-0114-00
- Zoning Designation: Commercial (C)
- Parcel Area: (1) Acre
- Occupancy: 8% (Max. permitted 50%)
- FEMA Flood Zone Designation: 'X'
- Set Back Requirements: None
- Maximum Building Elevation: 35'
- Estimated Volume of Soil Disturbance: 50 cubic yards
- Soil Types Present at Site:
 - > "Us" and "SE"
- TR-55 Storm Water Calcs:
 - > Pre development discharge volume of 11.57 cfs.
 - > Post development discharge volume of 12.68 cfs.
 - > Post development slight marginal increase of 1.11cfs
- PWD Drawing Reference Number: G9-297-786

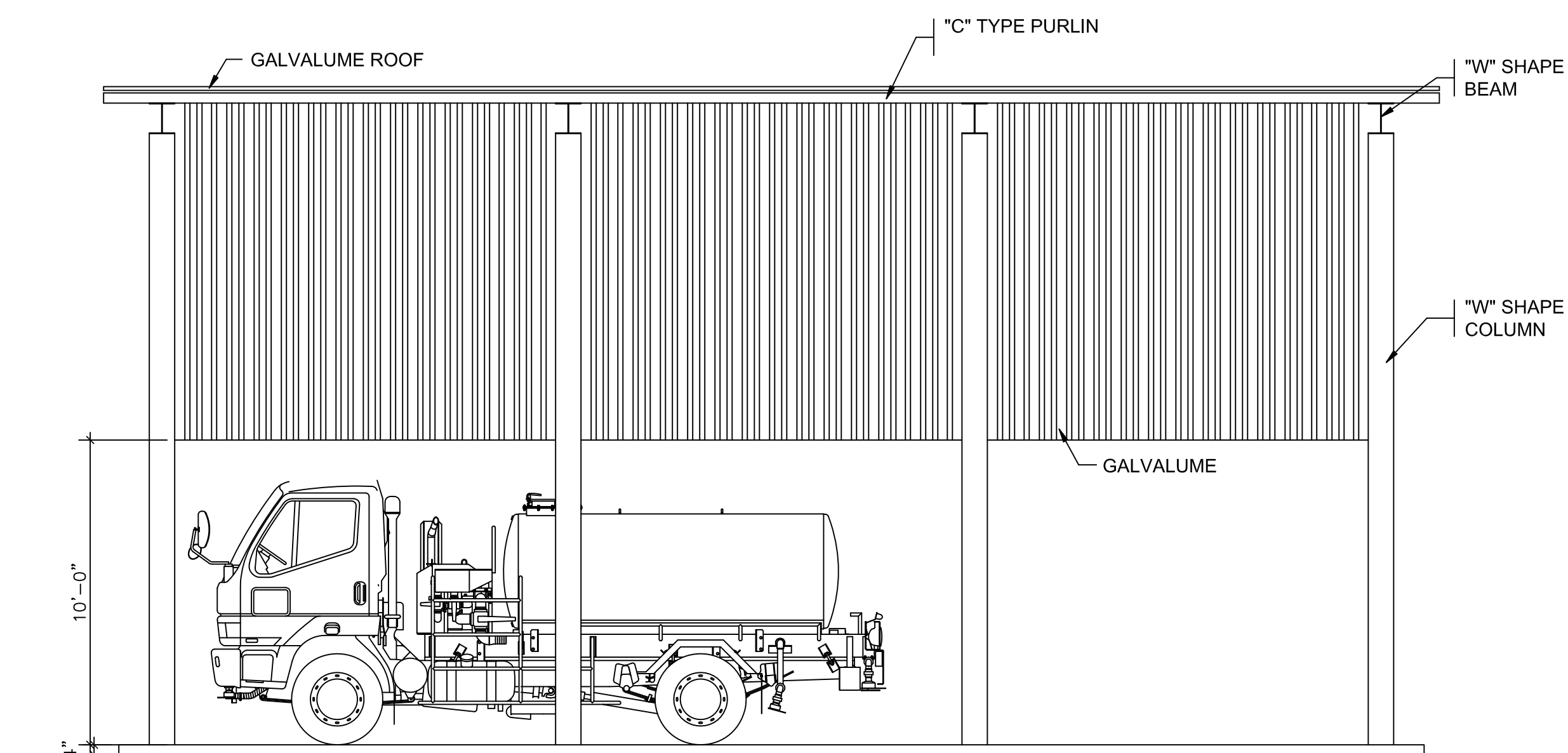
- Work to include:**
- Installation of all required BMPs and stormwater control devices prior to the onset of any earth change activities. Devices to be monitored and maintained for the duration of the project.
 - Placement of 40' storage container on site to secure materials and equipment.
 - Placement of 40' office trailer at location of new fuel storage facility.
 - Placement of 20' office trailer at location of existing trucking operation.
 - Excavation required to accommodate footings and slabs.
 - Erect 40'x22' mechanical workshop.
 - Erect 10'x10' guard house.
 - Cast 10'x27' concrete pad for diesel fuel tank.
 - Cast 30'x27' concrete slab with containment perimeter for ISO tank storage area.
 - Installation of (2) 200 amp electrical services and connection to public electrical utility.



1 BOLLARD DETAIL
A1

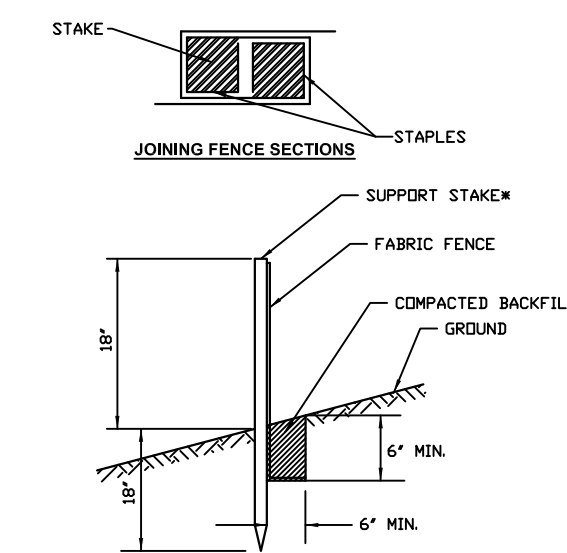


NORTH ELEVATION
Scale: 1/4" = 1'



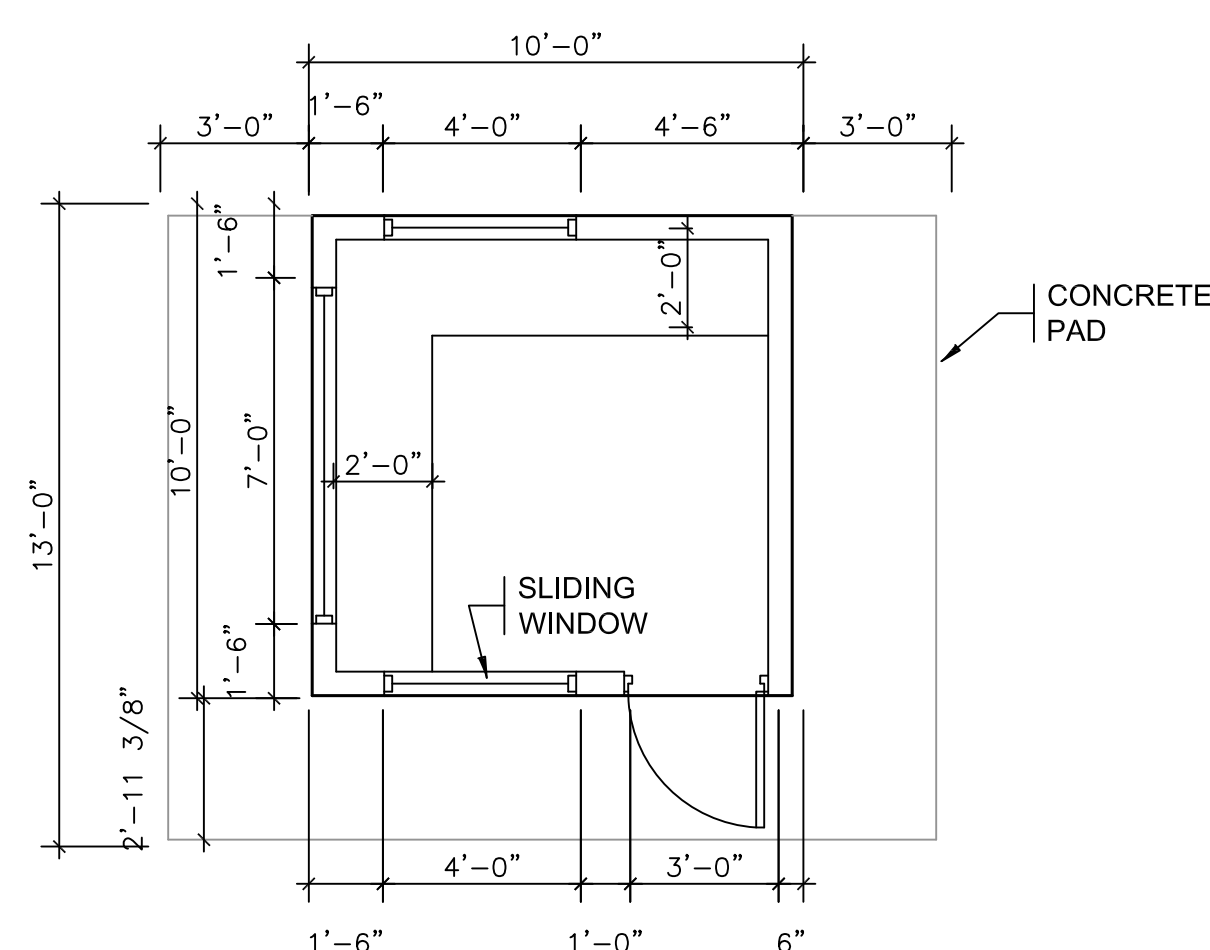
WEST ELEVATION
Scale: 1/4" = 1'

2 MECHANICAL WORKSHOP ELEVATION
A1

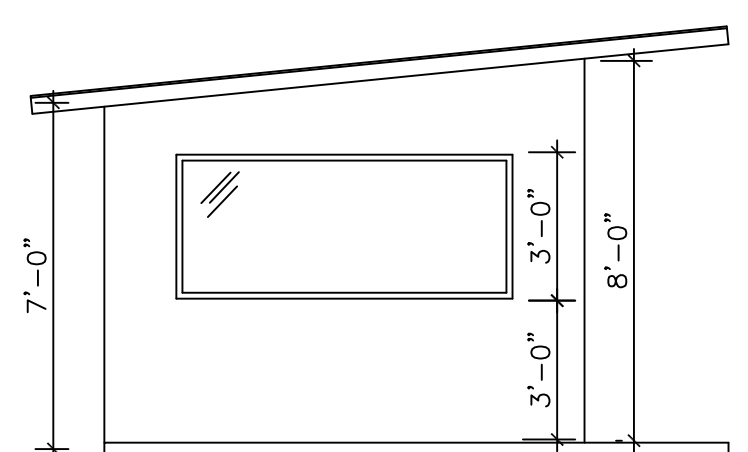


* Stakes spaced @ 8' maximum. Use 2" x 2" wood or equivalent steel stakes.
Fabric Fence must be placed at level existing grade. Both ends of the barrier must be extended at least 6 feet up slope at 45 degrees to the main barrier alignment.
Sediment must be removed when accumulations reach 1/2 the above ground height of the fence.
Any section of Fabric Fence which has been undermined or topped must be immediately replaced.

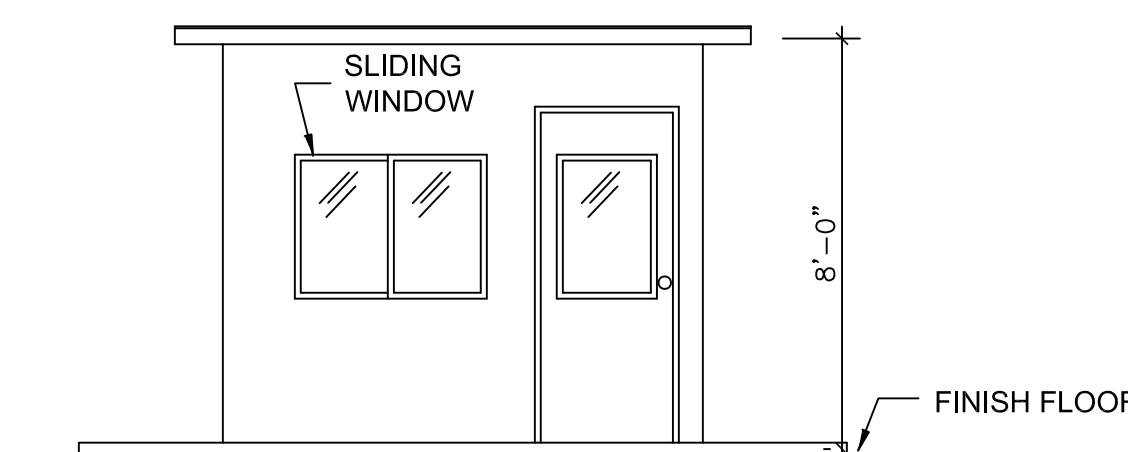
3 SILT FENCE DETAIL
Scale: NTS
A1



FLOOR PLAN
Scale: 1/4" = 1'

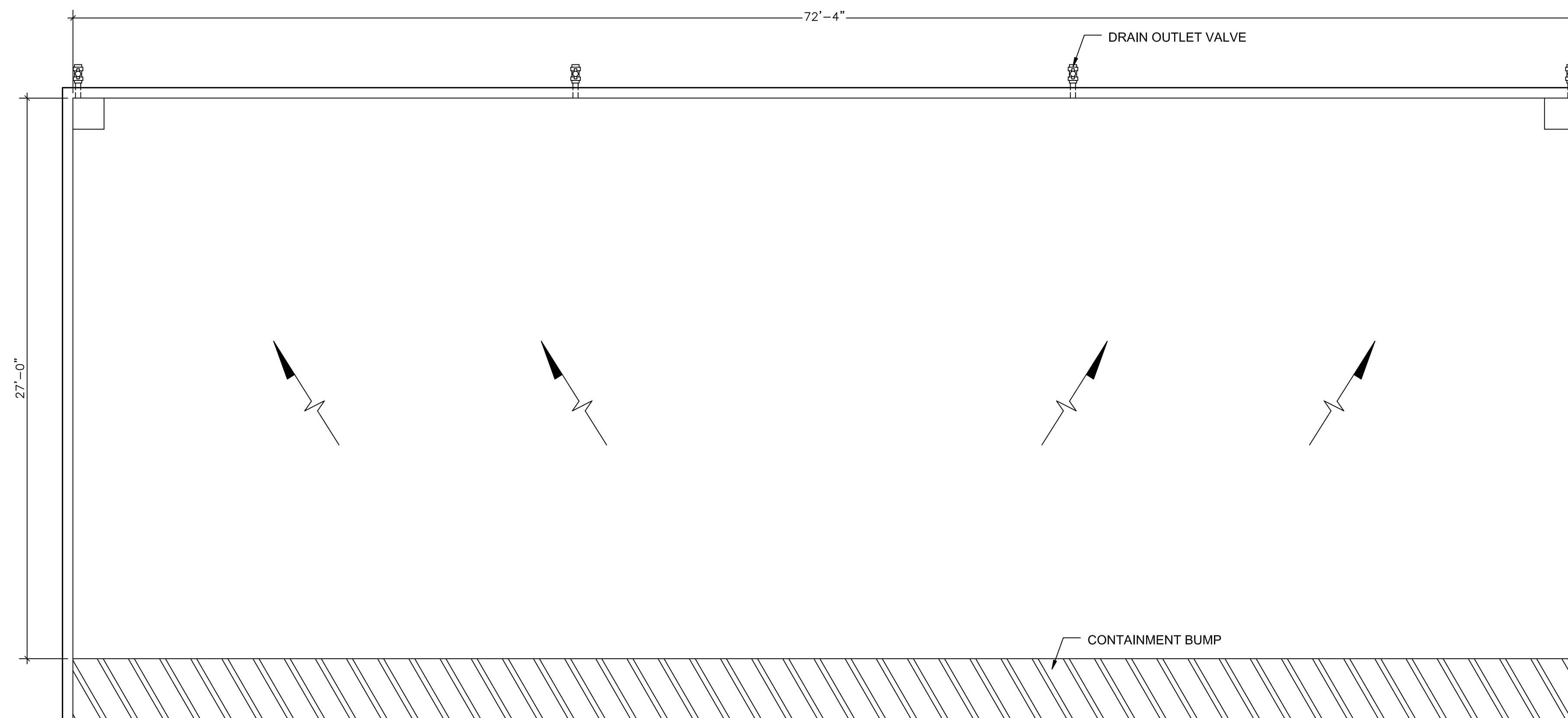


WEST ELEVATION
Scale: 1/4" = 1'

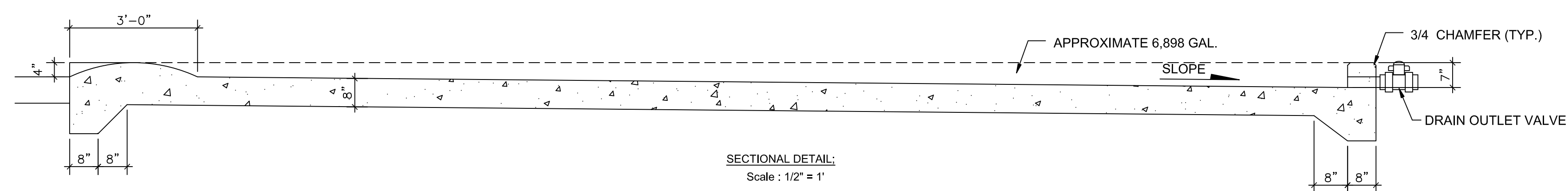


SOUTH ELEVATION
Scale: 1/4" = 1'

4 GUARD HOUSE
A1



FLOOR PLAN
Scale: 1/4" = 1'



SECTIONAL DETAIL:
Scale: 1/2" = 1'

5 ISO TANK CONTAINMENT AREA
A1

NOTES:
- CAPACITY OF CONTAINMENT SHALL BE NO LESS THAN 110% OF THE COMBINED TOTAL ISO TANKS STORAGE CAPACITY

ENGINEER/DESIGNER:

C.F. ROSENBERG
7351 ESTATE BOVONI,
ST. THOMAS, VI 00802
340-779-2222

(LICENSE # 500-E)



PROJECT TITLE:

DRY MARINA, LLC
STORAGE
FACILITY

LOCATION:

17D-1 ESTATE BOVONI
NO.1&2 FRENCHMAN'S BAY
QUARTER
ST. THOMAS, USVI

DRAWING TITLE:

DETAILS &
ELEVATIONS

SCALE: As Noted
24x36D

PLOT DATE:

12-25-2022

SHEET NO:

A1